

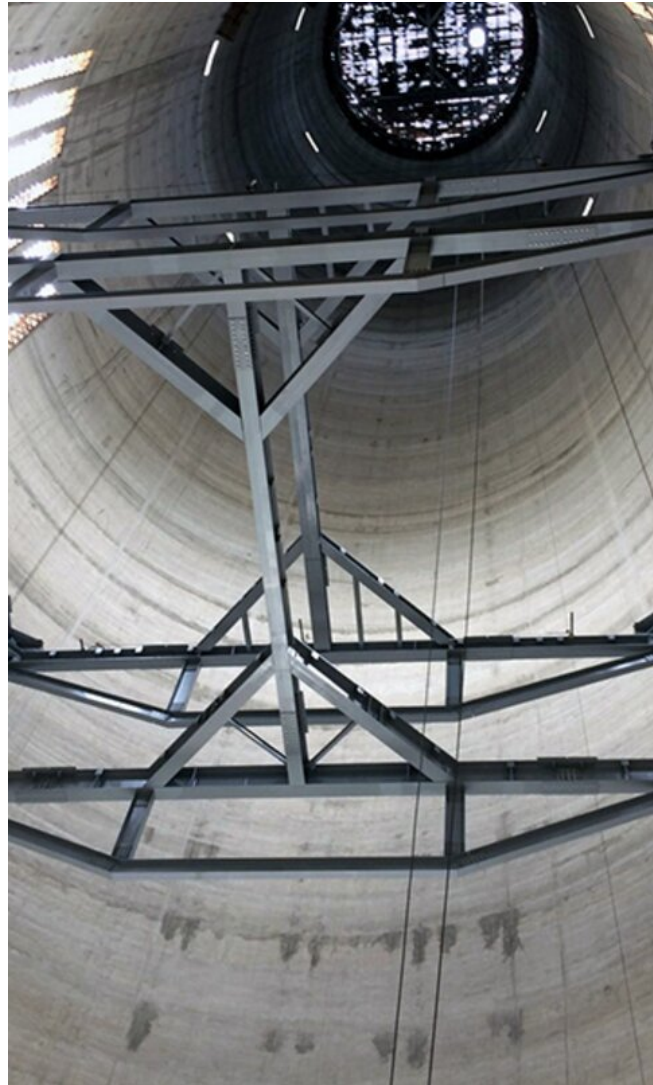
Cheminées

Levage de charges lourdes

Levage lourd

Levage lourd pour une cheminée à Jimah

MALAISIE 2016 - 2017



Lieu de construction

Malaisie

Durée de construction

2016 - 2017

Lifting of the platforms and liner

Lifting Height: 150,00 m / Liner: 156,00 m

Lifting Weight of platforms: 2 x 24,00 t + 1 x 60,00 t

Liner: 2 x 230,00 t



**Outstanding solutions
in formwork
engineering**

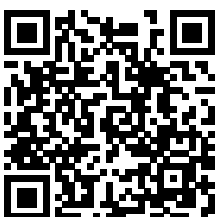
**Itzlinger Hauptstraße
105
5020 Salzburg,
Autriche**

T +43 662 42 04 52

F +43 662 42 04 58

office@gleitbau.com

www.gleitbau.com



www.gleitbau.com