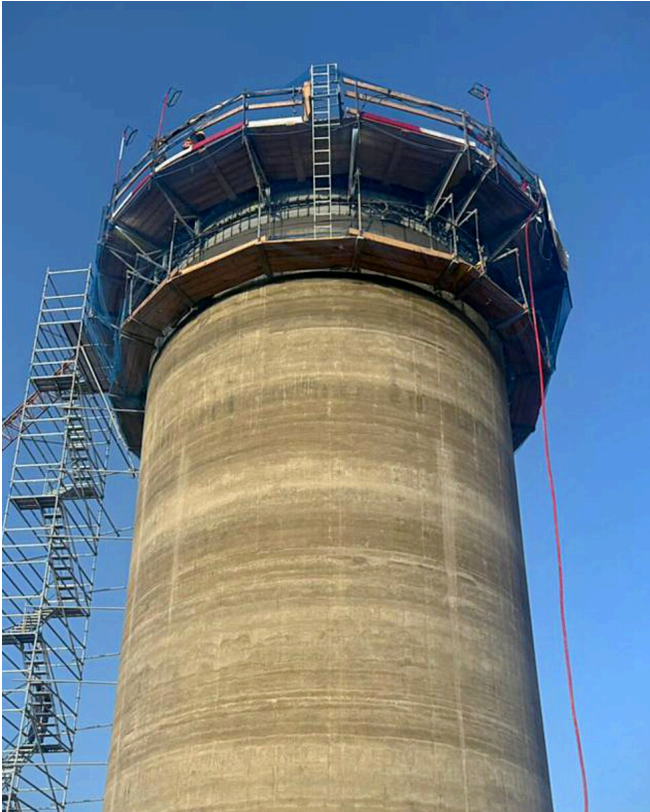


# 18 piles for LGV Kenitra bridge - Marrakech



Location	Morocco
Construction Time	2026
Diameter	8 m / 9.2 m
Height	25 m / 27 m / 29 m / 30 m / 32 m
Wall thickness	1 m / 1.4 m
Total Surface Area	36,950 m <sup>2</sup>



**Outstanding solutions in  
formwork engineering**

**Itzlinger Hauptstraße 105  
5020 Salzburg, Austria**

T +43 662 42 04 52

F +43 662 42 04 58

office@gleitbau.com

[www.gleitbau.com](http://www.gleitbau.com)

