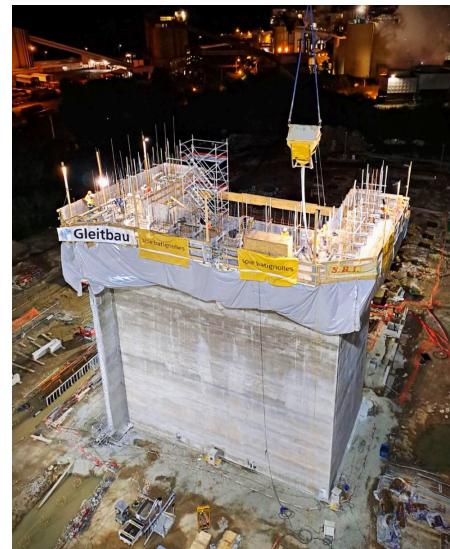
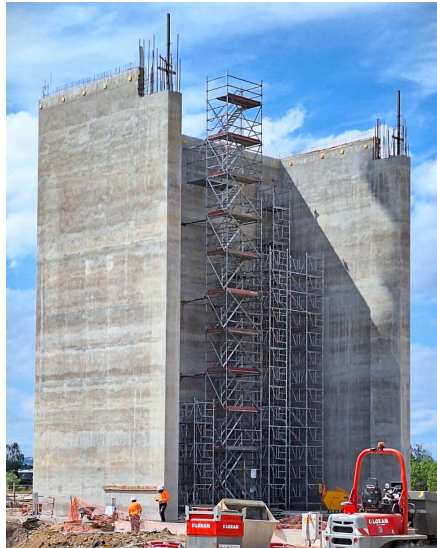


Chaufferie Novasteam

Suez



Location	France
Construction Time	2024
Height	19.9 m
Wall thickness	0.8 m / 0.4 m
Formwork runmeter	75.1 m



**Outstanding solutions in
formwork engineering**

**Itzlinger Hauptstraße 105
5020 Salzburg, Austria**

T +43 662 42 04 52

F +43 662 42 04 58

office@gleitbau.com

www.gleitbau.com