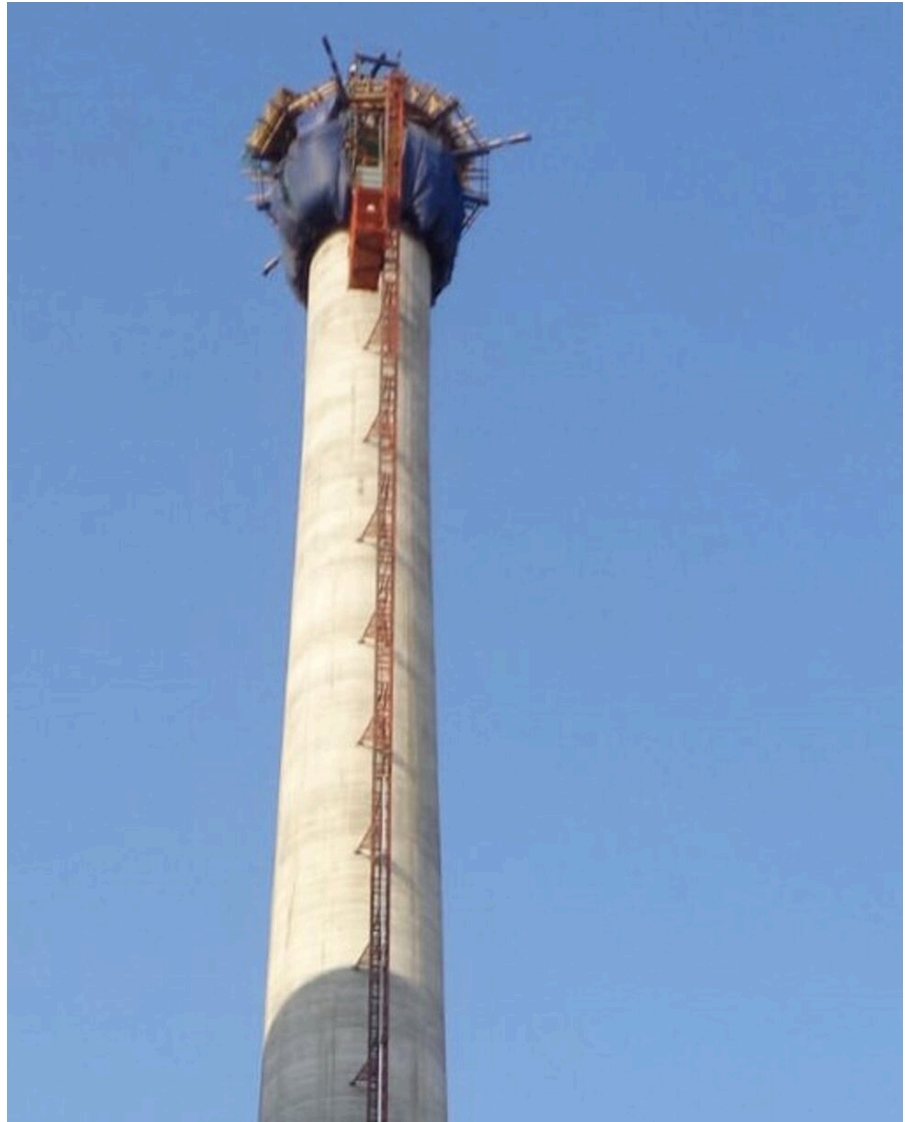


Conical Chimney Posco

SOUTH KOREA 2022



Location	South Korea
Construction Time	2022
Height	147 m
Start-Diameter	11.6 m
End-Diameter	5.8 m
Start-Wall thickness	0.6 m
End-Wall Thickness	0.3 m



**Outstanding solutions in
formwork engineering**

**Itzlinger Hauptstraße 105
5020 Salzburg, Austria**

T +43 662 42 04 52

F +43 662 42 04 58

office@gleitbau.com

www.gleitbau.com