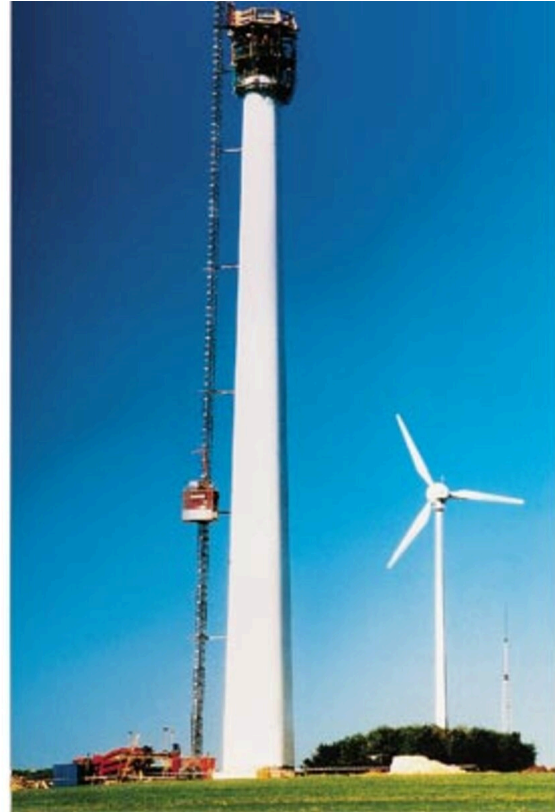


Towers

Slipforming

Windfarm Zurndorf

AUSTRIA 1997



Location	Austria
Construction Time	1997
Height	63.5 m
Total Surface Area	1,500 m ²



**Outstanding solutions in
formwork engineering**

**Itzlinger Hauptstraße 105
5020 Salzburg, Austria**

T +43 662 42 04 52

F +43 662 42 04 58

office@gleitbau.com

www.gleitbau.com

