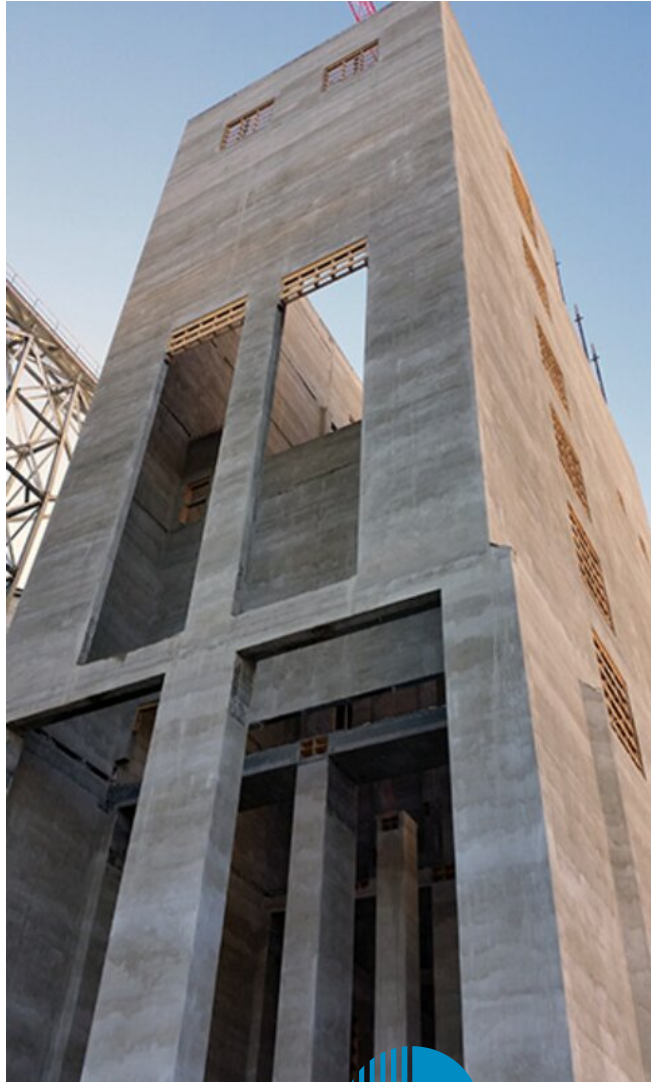


Silos

Multi-cell silos

Saalemühle Alsleben – New Construction Incoming Department 3/4

GERMANY 2015 - 2016



| | |
|--------------------|----------------------|
| Location | Germany |
| Construction Time | 2015 - 2016 |
| Height | 45 m |
| Formwork runmeter | 320 m |
| Total Surface Area | 8,500 m ² |



**Outstanding solutions
in formwork
engineering**

**Itzlinger Hauptstraße
105**

5020 Salzburg, Austria

T +43 662 42 04 52

F +43 662 42 04 58

office@gleitbau.com

www.gleitbau.com



www.gleitbau.com



**Outstanding solutions
in formwork
engineering**

**Itzlinger Hauptstraße
105**

5020 Salzburg, Austria

T +43 662 42 04 52

F +43 662 42 04 58

office@gleitbau.com

www.gleitbau.com